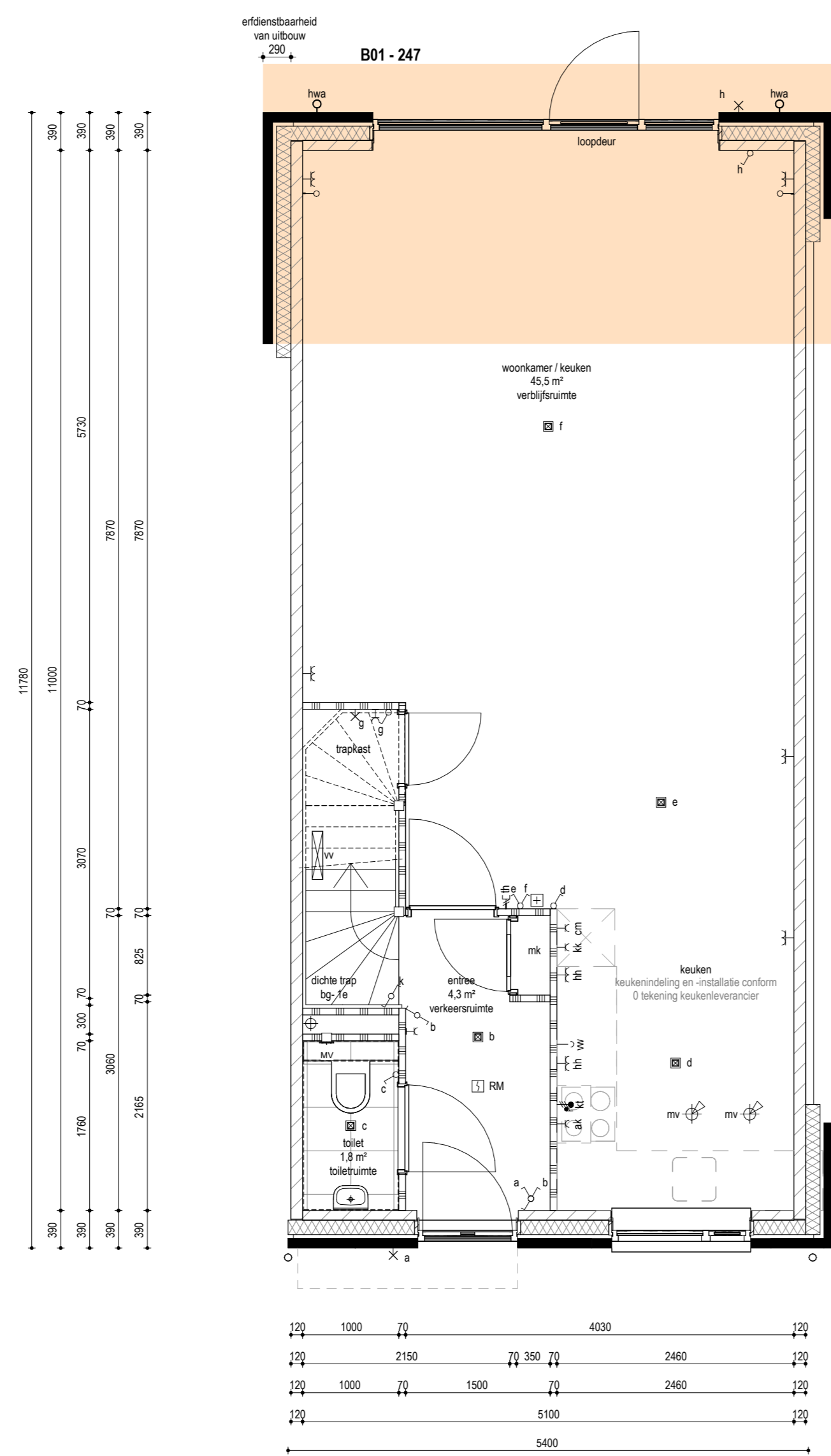
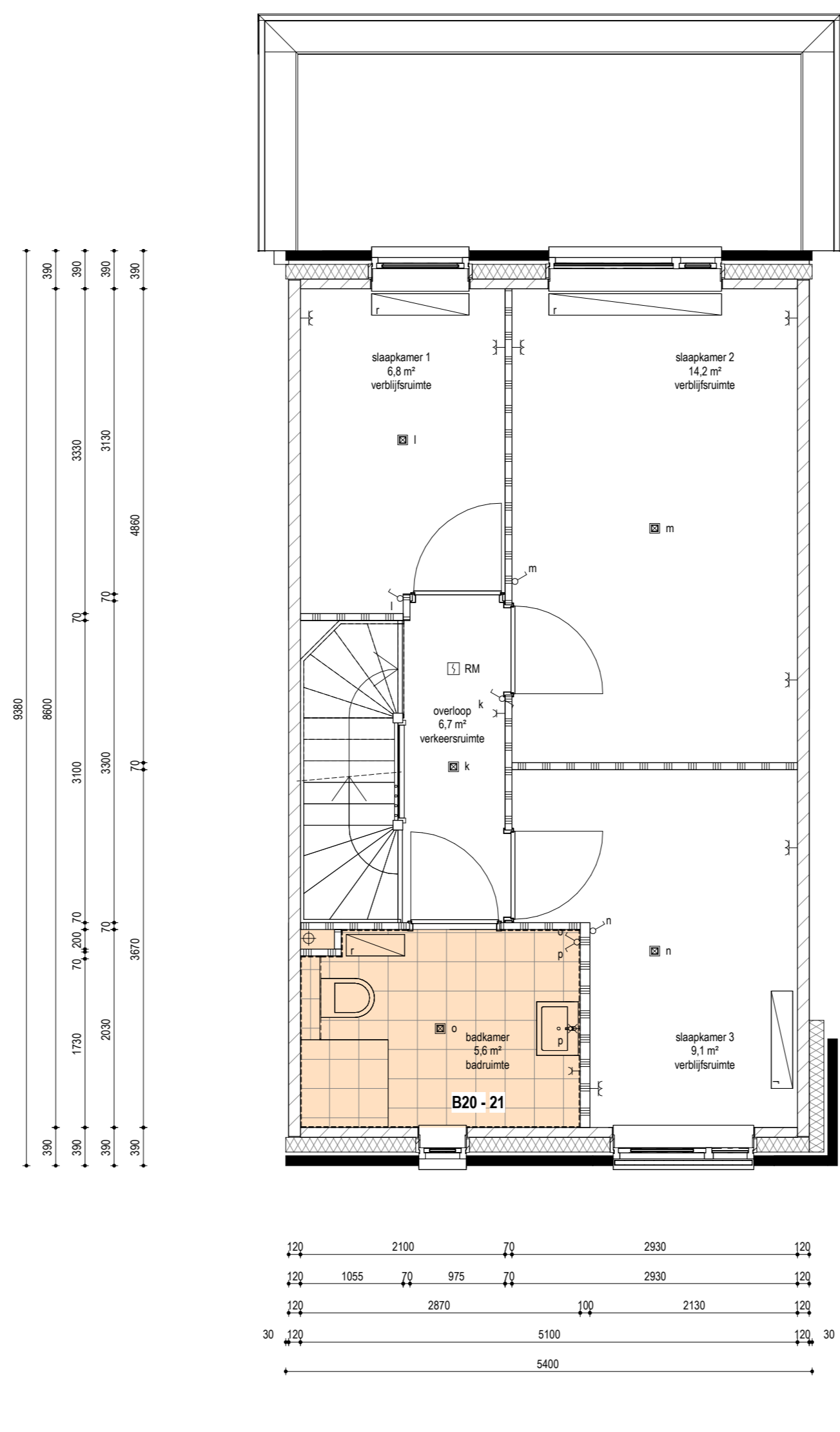


BEGANE GROND  
1:50



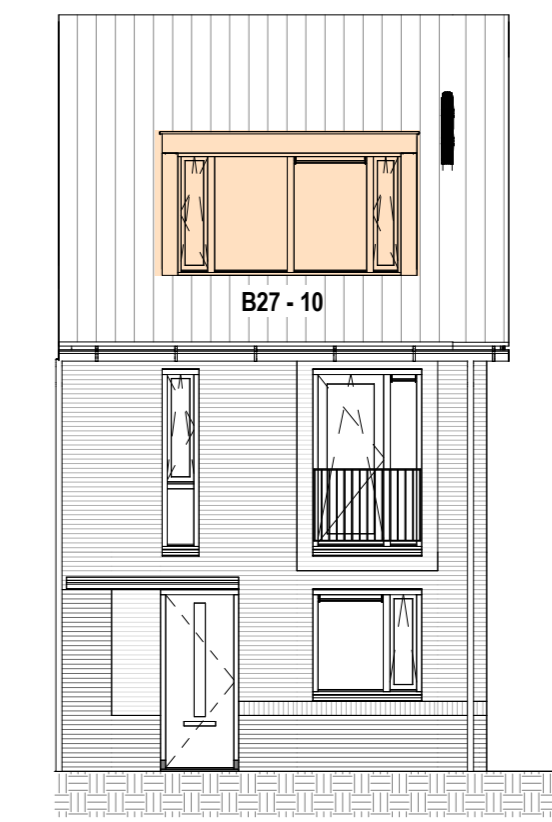
BEGANE GROND  
1:50



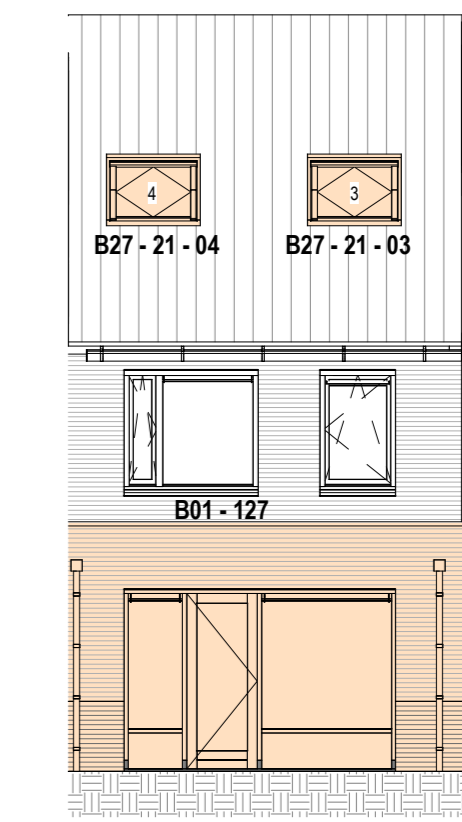
EERSTE VERDIEPING  
1:50



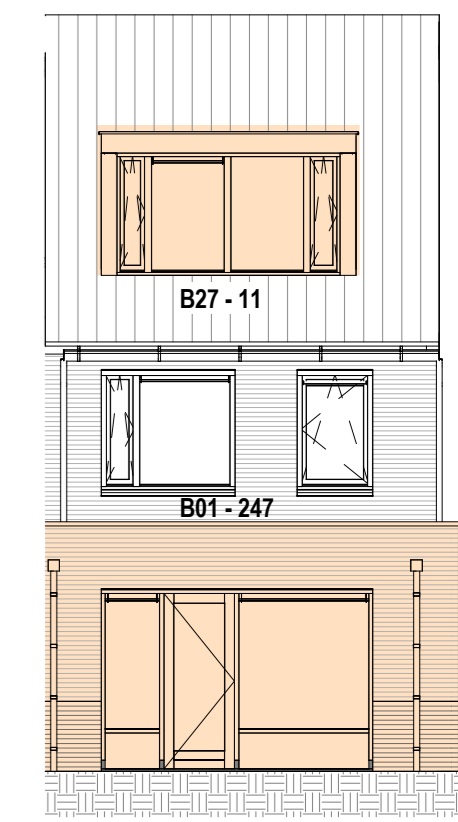
VOORGEVEL  
1:100



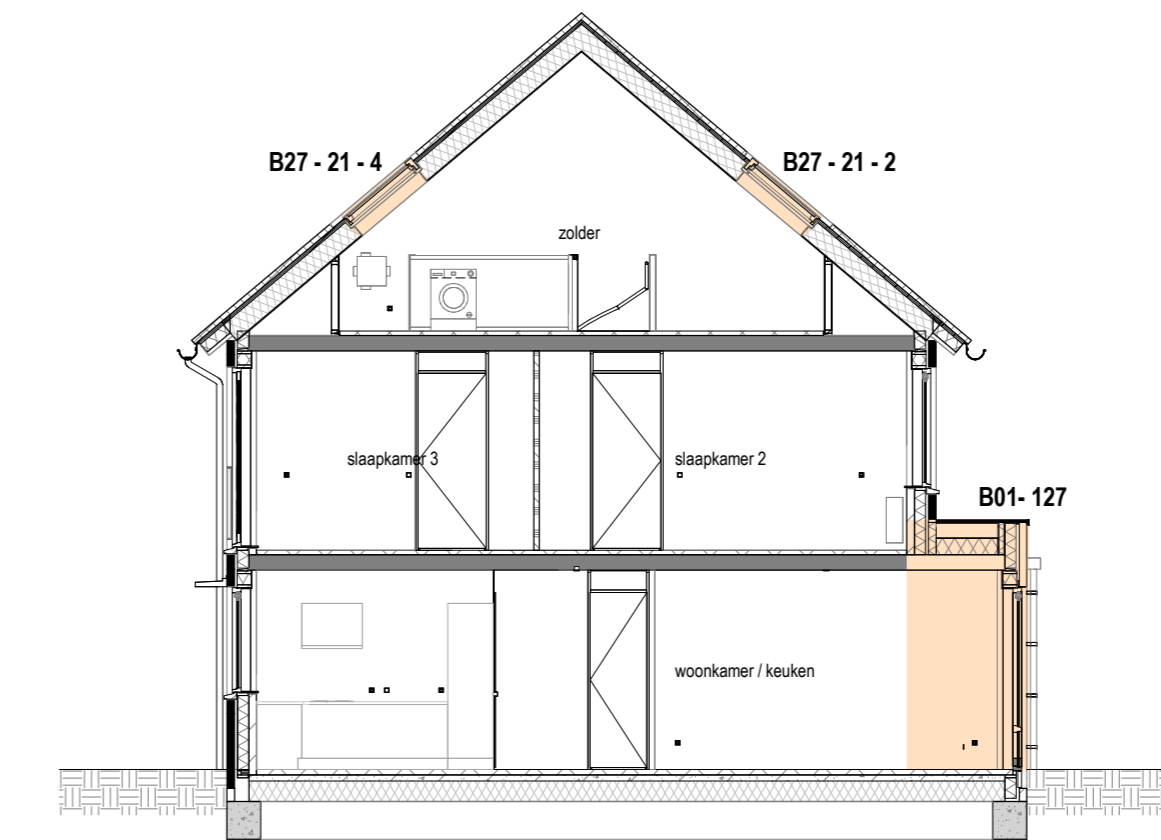
VOORGEVEL  
1:100



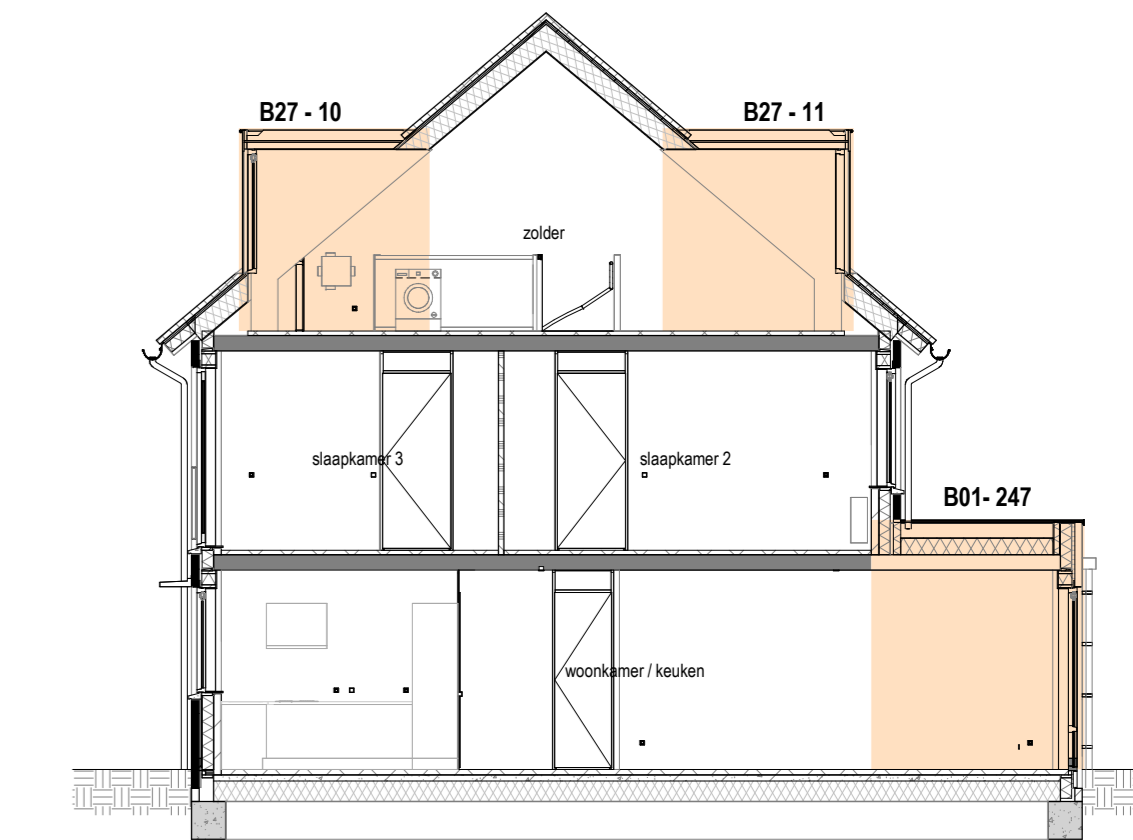
ACHTERGEVEL  
1:100



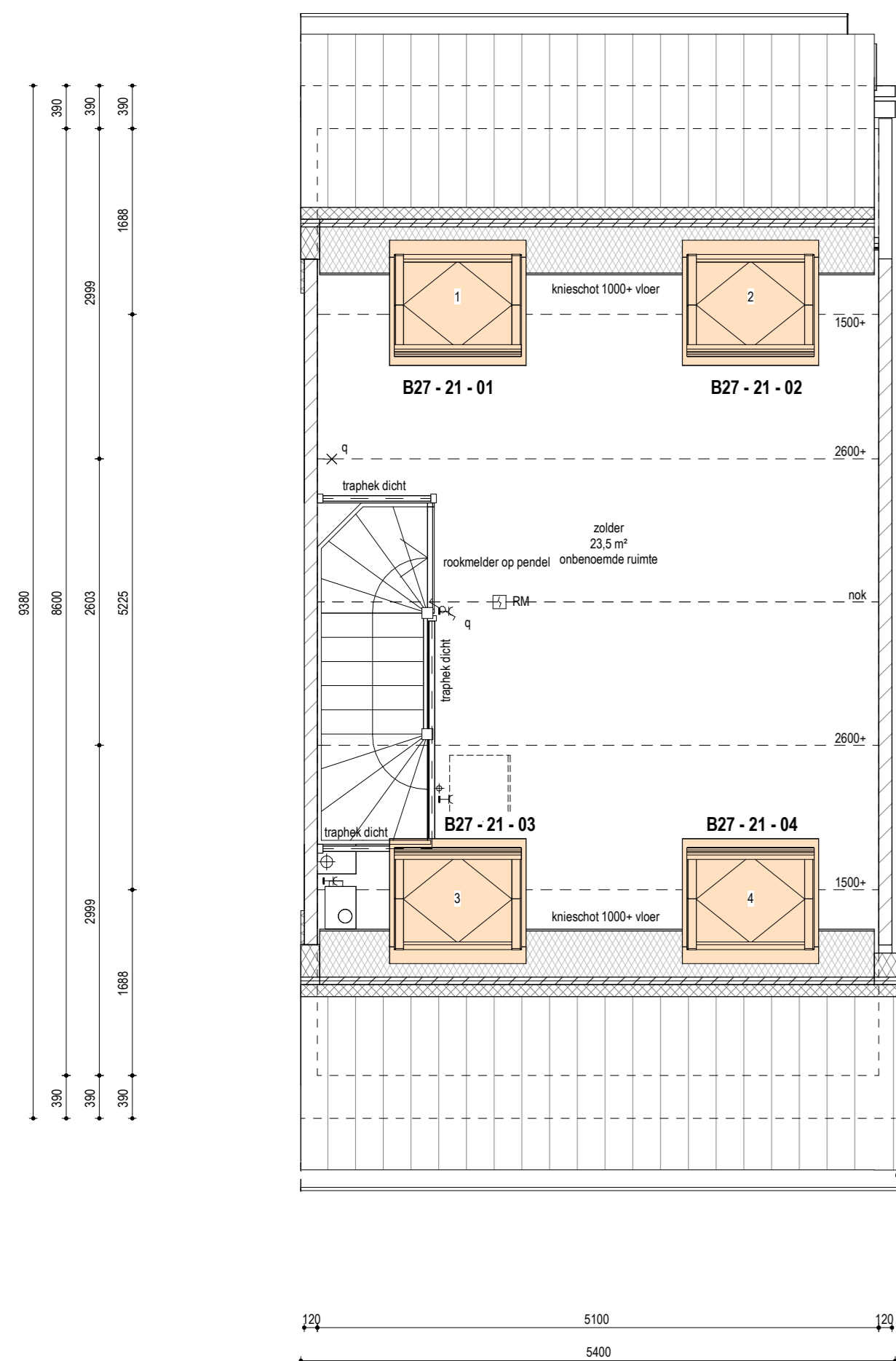
ACHTERGEVEL  
1:100



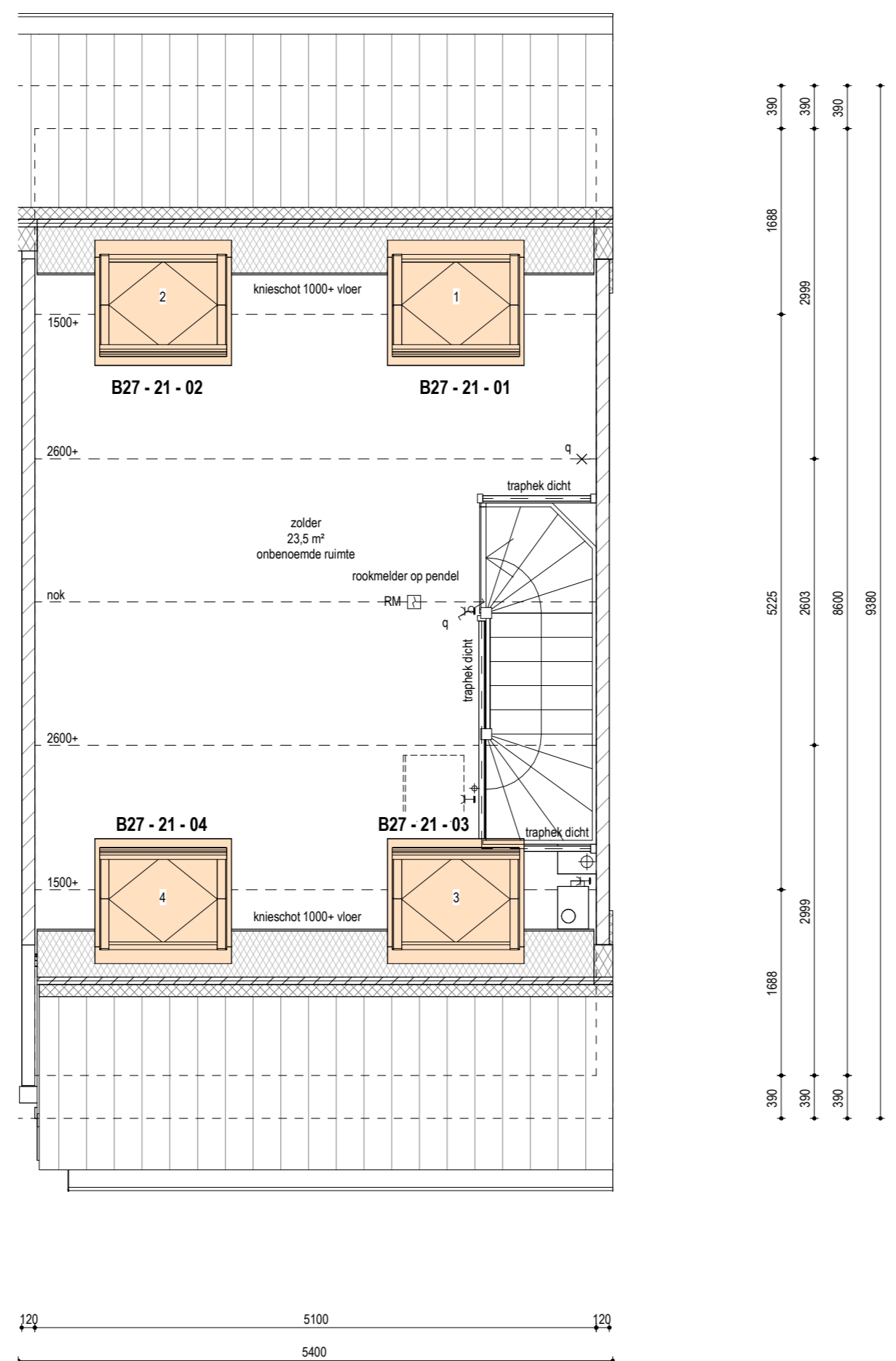
DOORSNEDE  
1:50



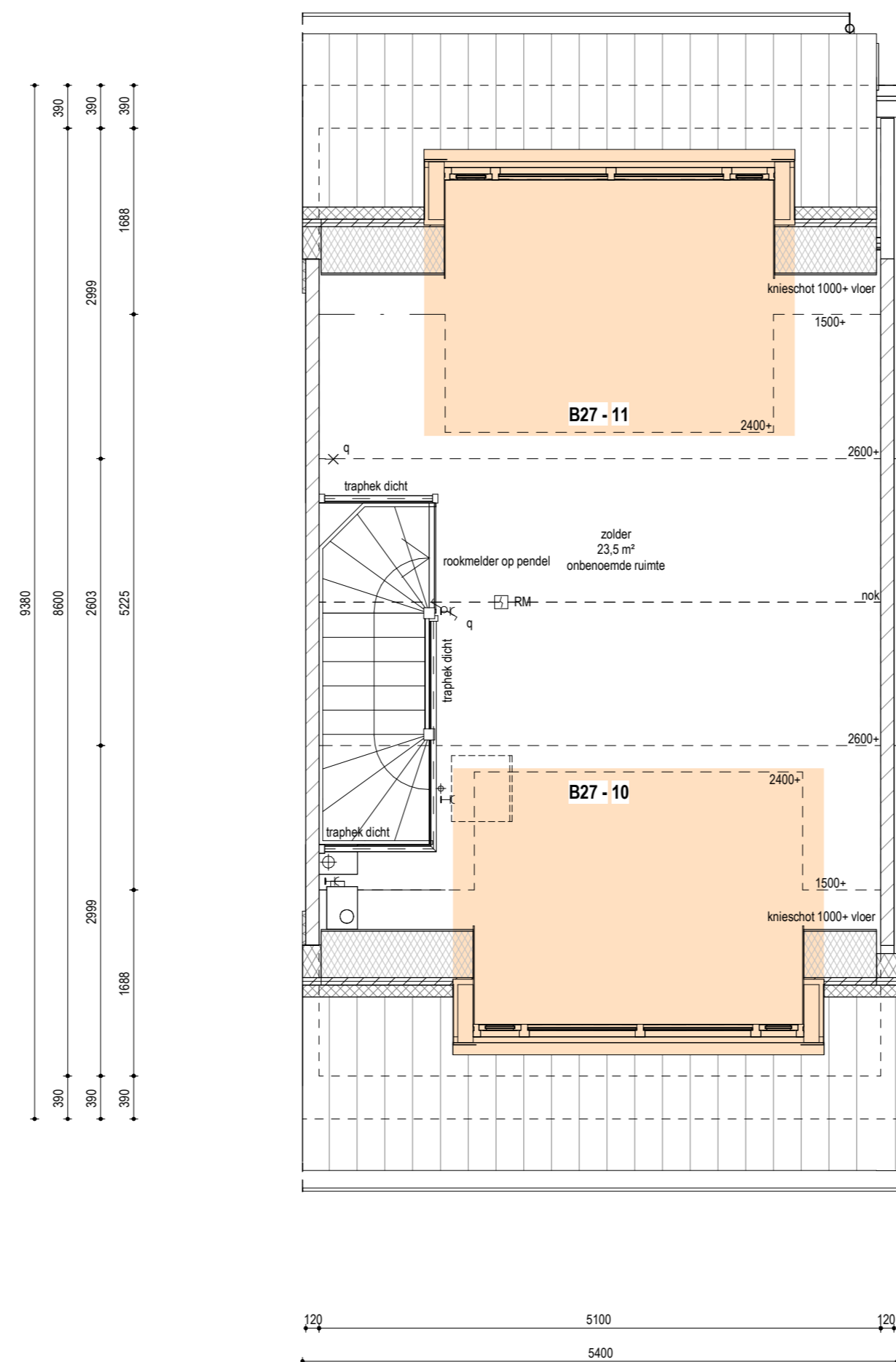
DOORSNEDE  
1:100



TWEDE VERDIEPING  
1:50  
optie dakramen bouwnummer 16



TWEDE VERDIEPING GESPIEGELD  
1:50  
optie dakramen bouwnummer 15



TWEDE VERDIEPING  
1:50

- RENVOOI (MATERIALEN PLATTEGROND EN DOORSNEDE)**
- GEFÛLSTEEN
  - KALKANDSTENEN
  - GEBOND
  - WANCTEGELS
  - DEKVELD
  - ISOLATIE

**RENVOOI (INSTALLATIES E & W)**

- VENTILATEROOSTER
- HEMELWATERAFVOER
- EMBELE WANDCONTACTDOOS
- DUBBELE WANDCONTACTDOOS LOGEND
- ANGLUFTPUNT ONDERAARD (LOZE LEIDING)
- EMBELEPOLICE SCHWELLAAR
- WISSELSCHWELLAAR
- SERIESCHWELLAAR
- SERIE - WISSELSCHWELLAAR
- COMBIKATE WISSELSCHWELLAAR - HANDBCONTACTDOOS
- PLAFONDLICHTPUNT
- HANDBLICHTPUNT

- ROOMWELDER
- BEDEKKINGSPANEEL MECHANISCHE VENTILATIE
- PLAFONTE THERMOSTAAT
- VERBODER (RADIATOR)
- VERGELLER VERWARMING
- AFZUIGVENTIL MECHANISCHE VENTILATIE IN PLAFOND
- AFZUIGVENTIL MECHANISCHE VENTILATIE OP WAND
- MECHANISCHE VENTILATIE (RUIT)
- OPSTELPLAATS WANDAPPARATUUR