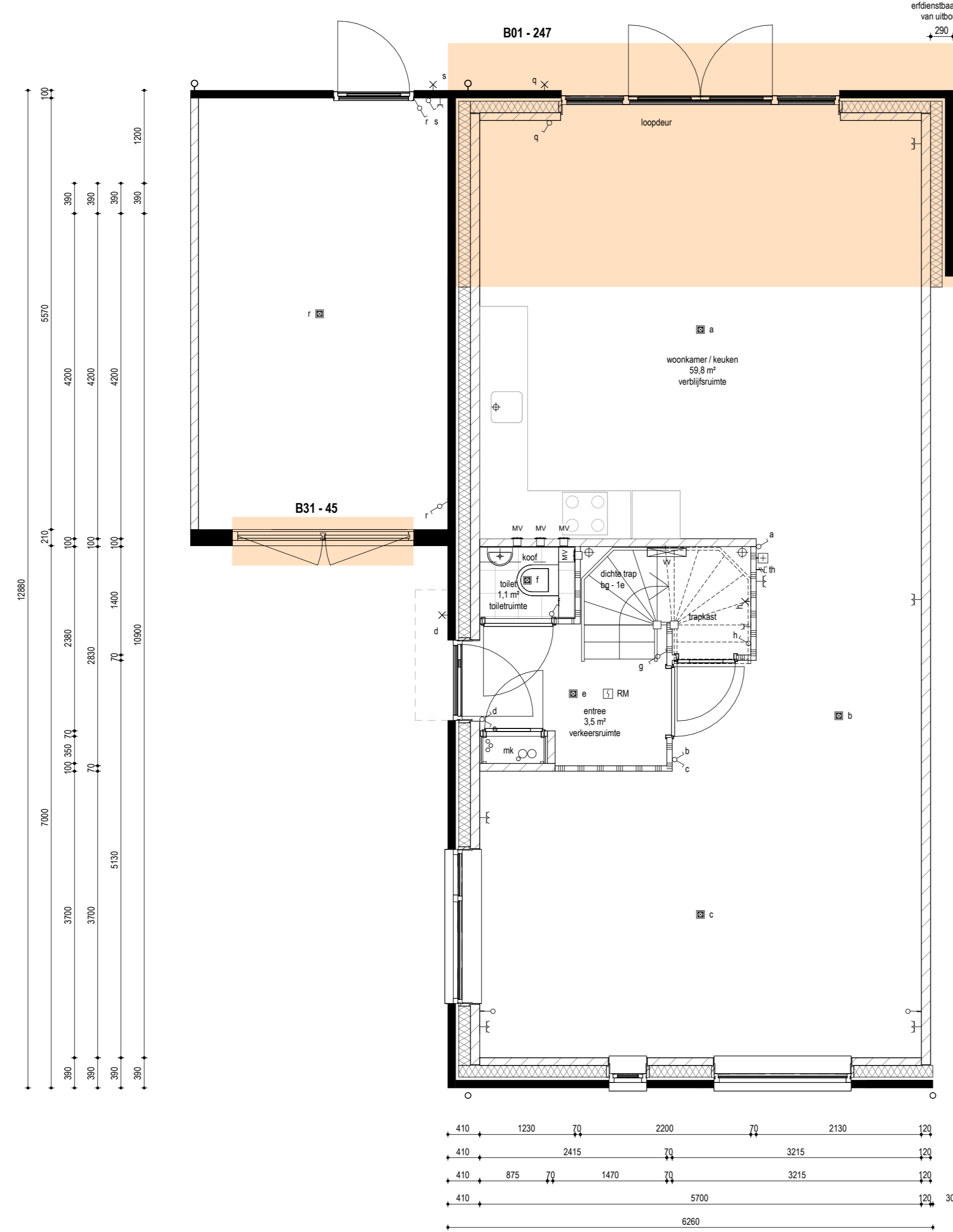
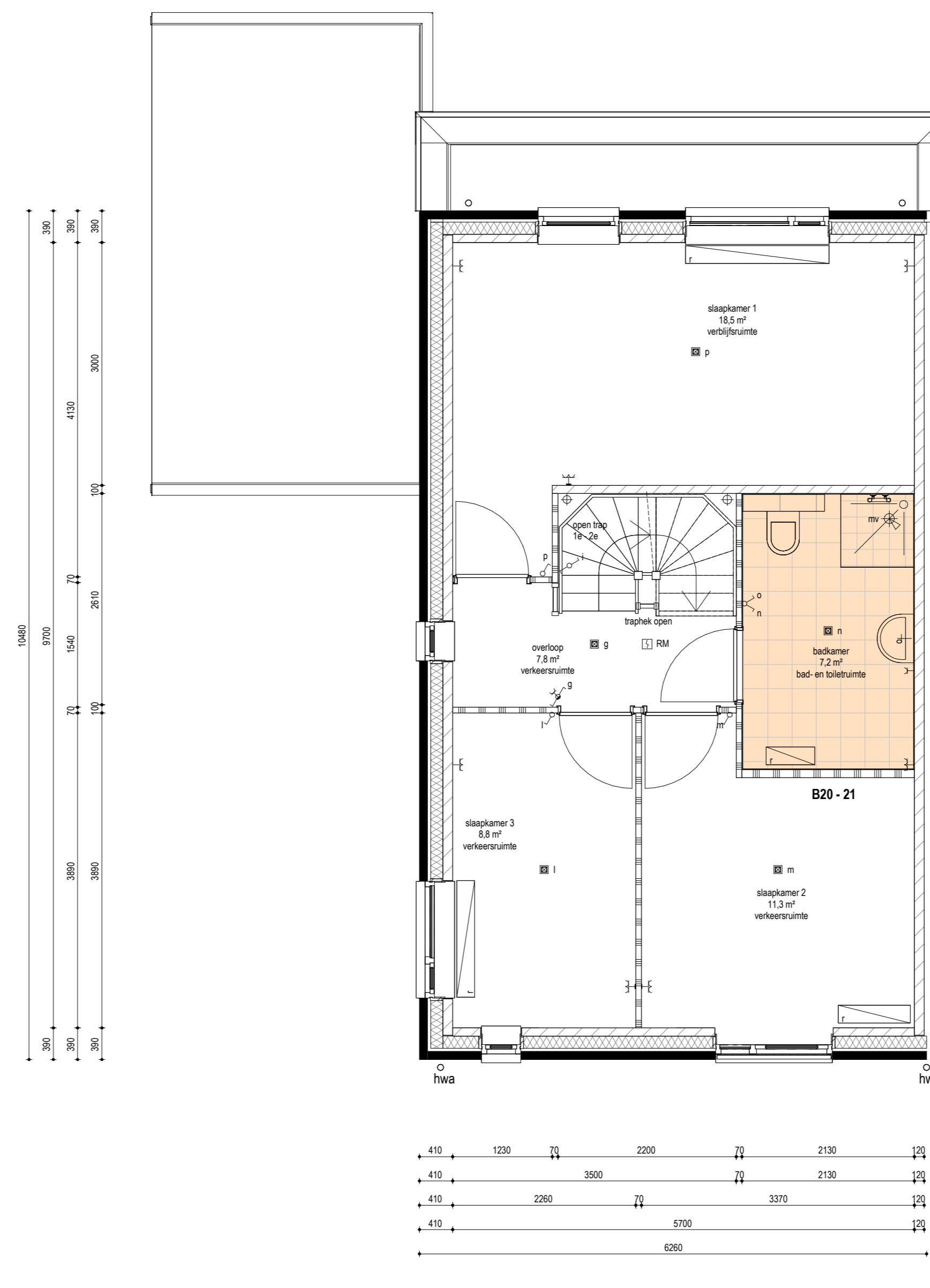


BEGANE GROND  
1 : 50



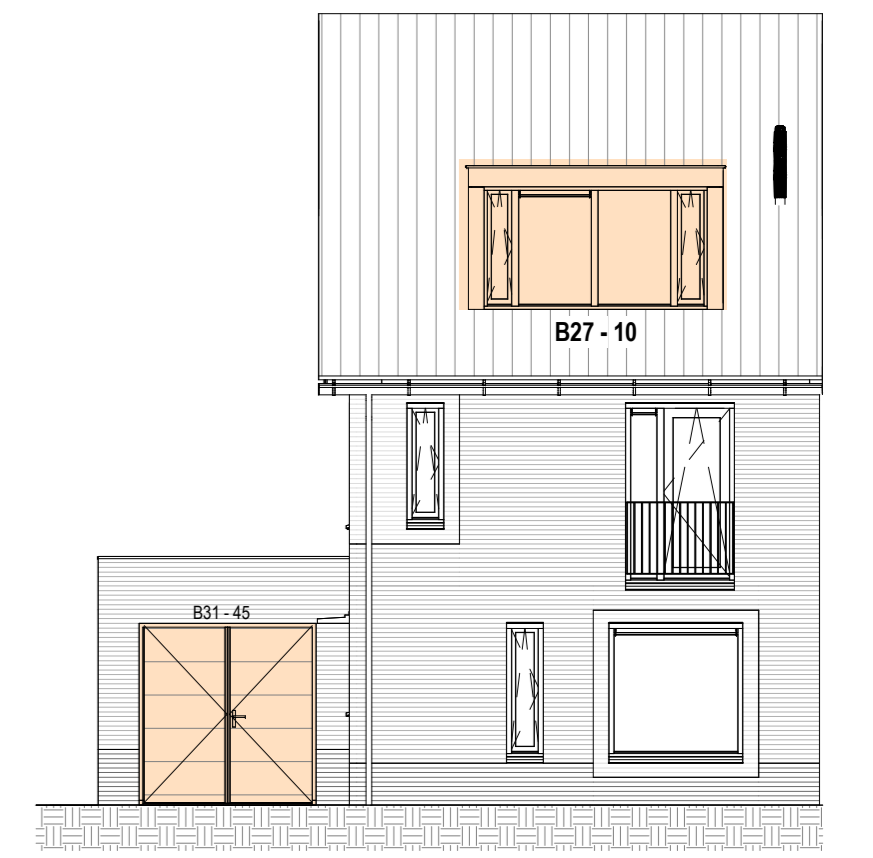
BEGANE GROND  
1 : 50



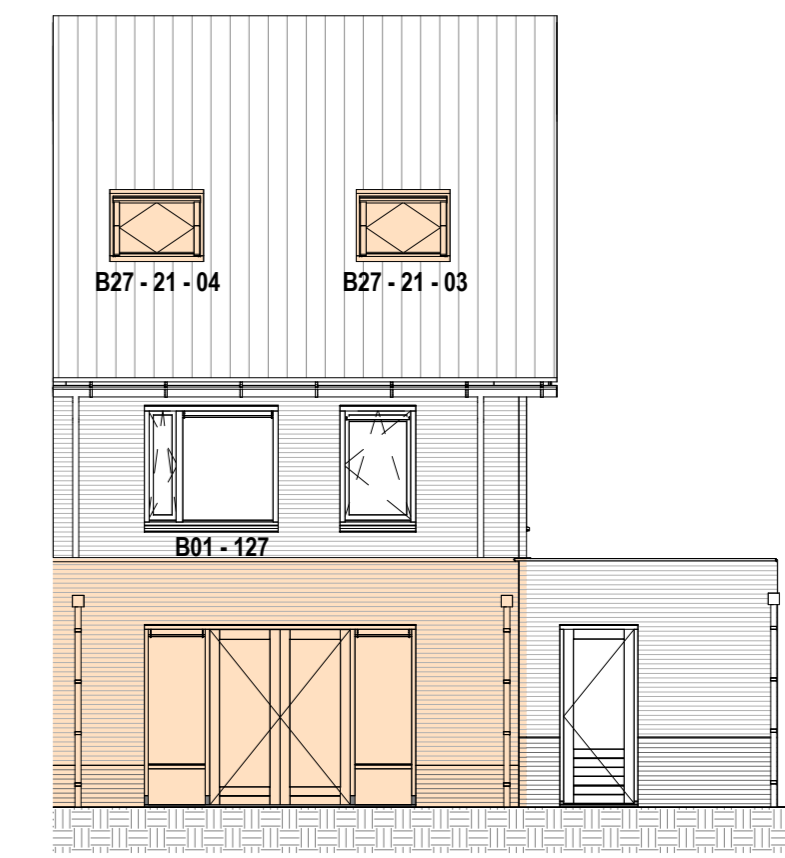
EERSTE VERDIEPING  
1 : 50



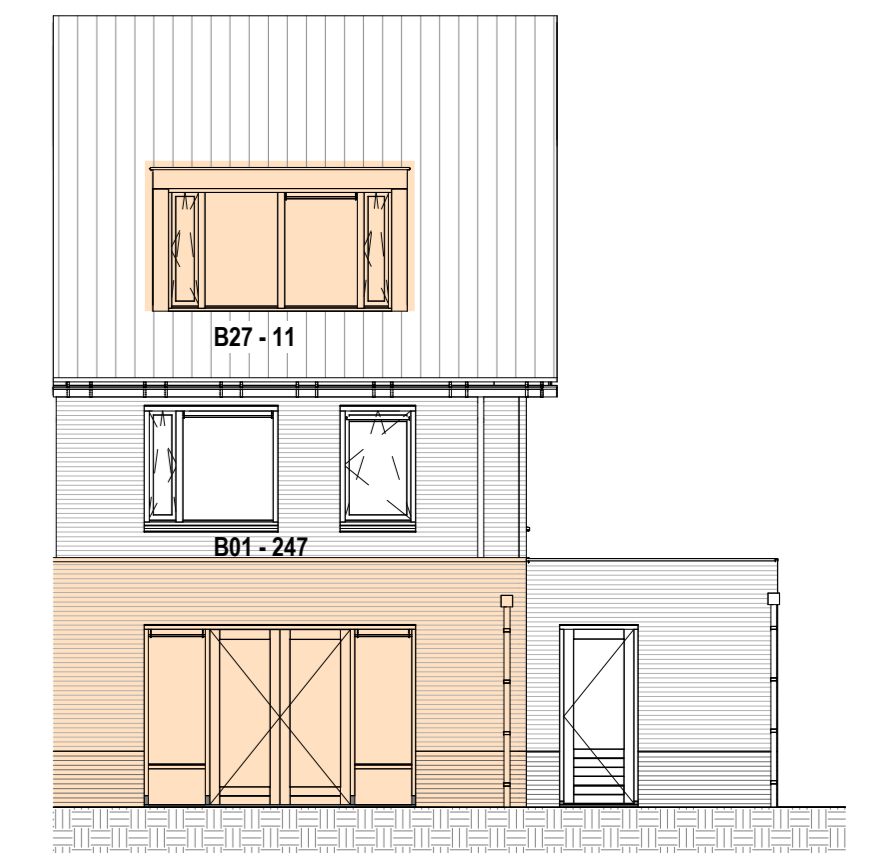
VOORGEVEL  
1 : 100



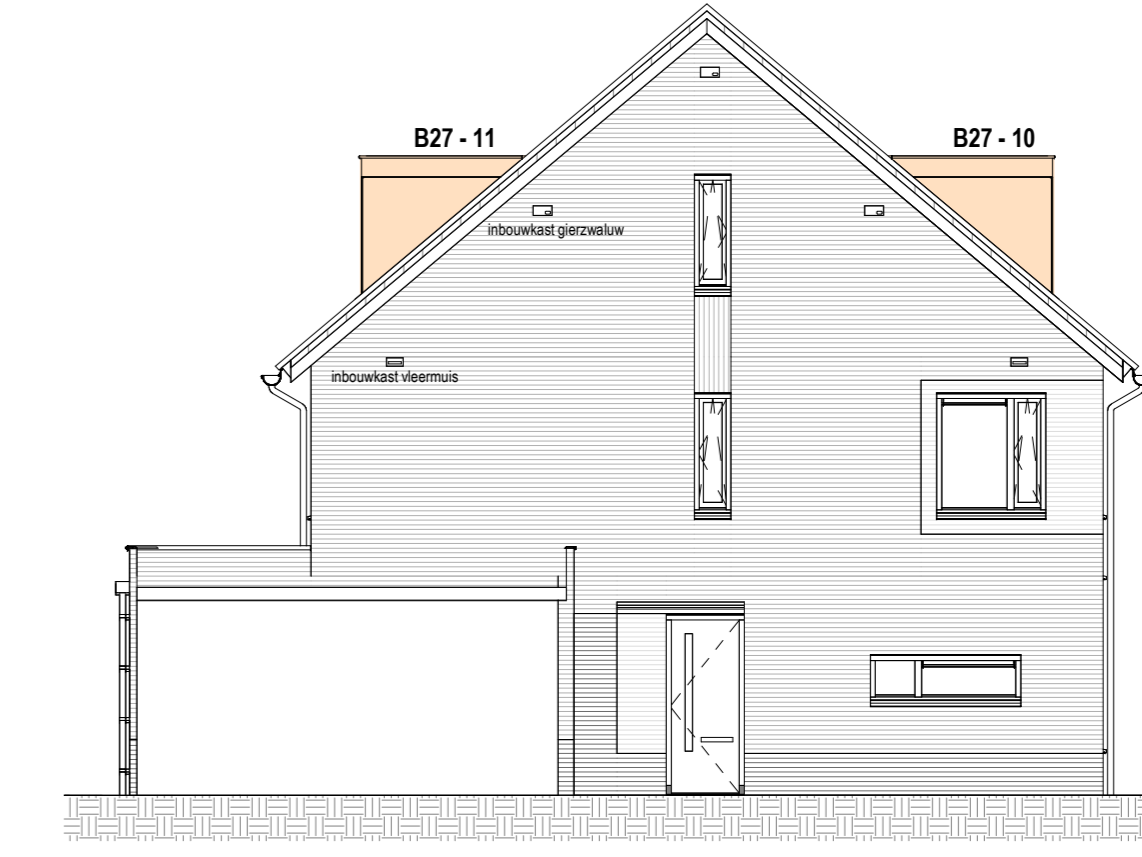
VOORGEVEL  
1 : 100



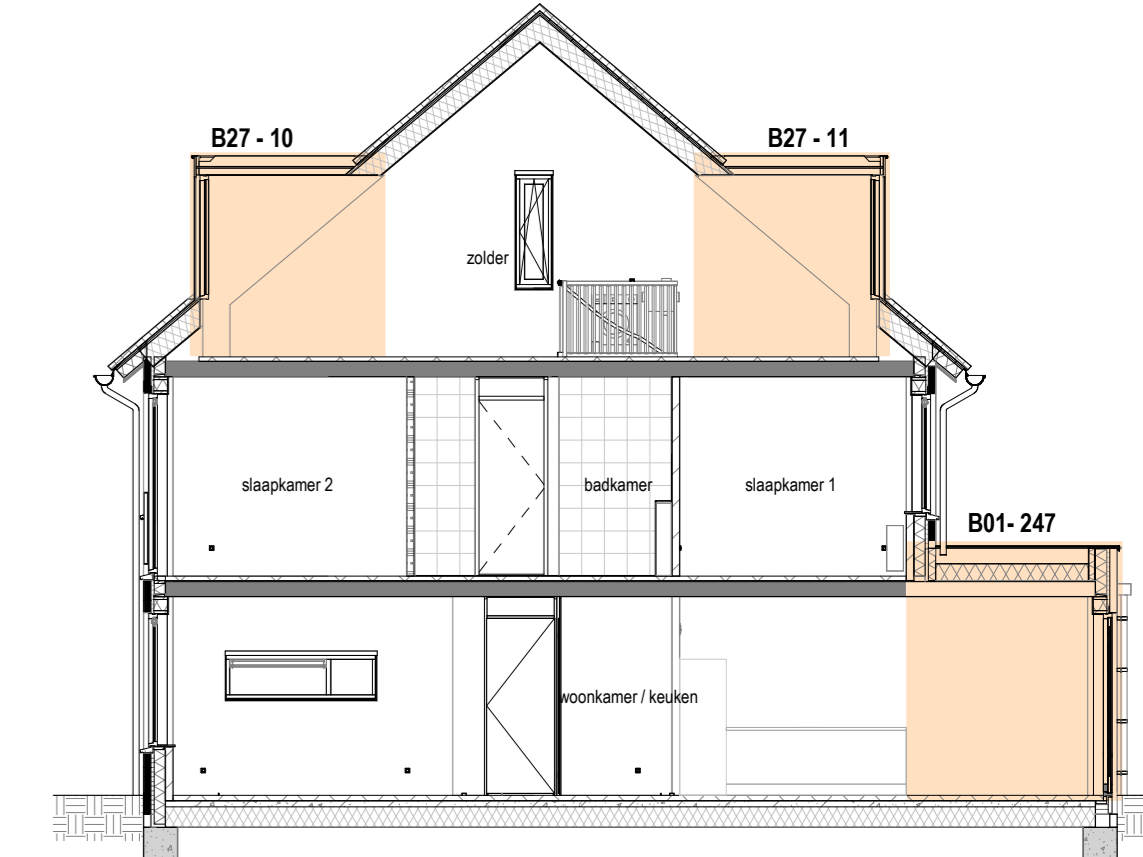
ACHTERGEVEL  
1 : 100



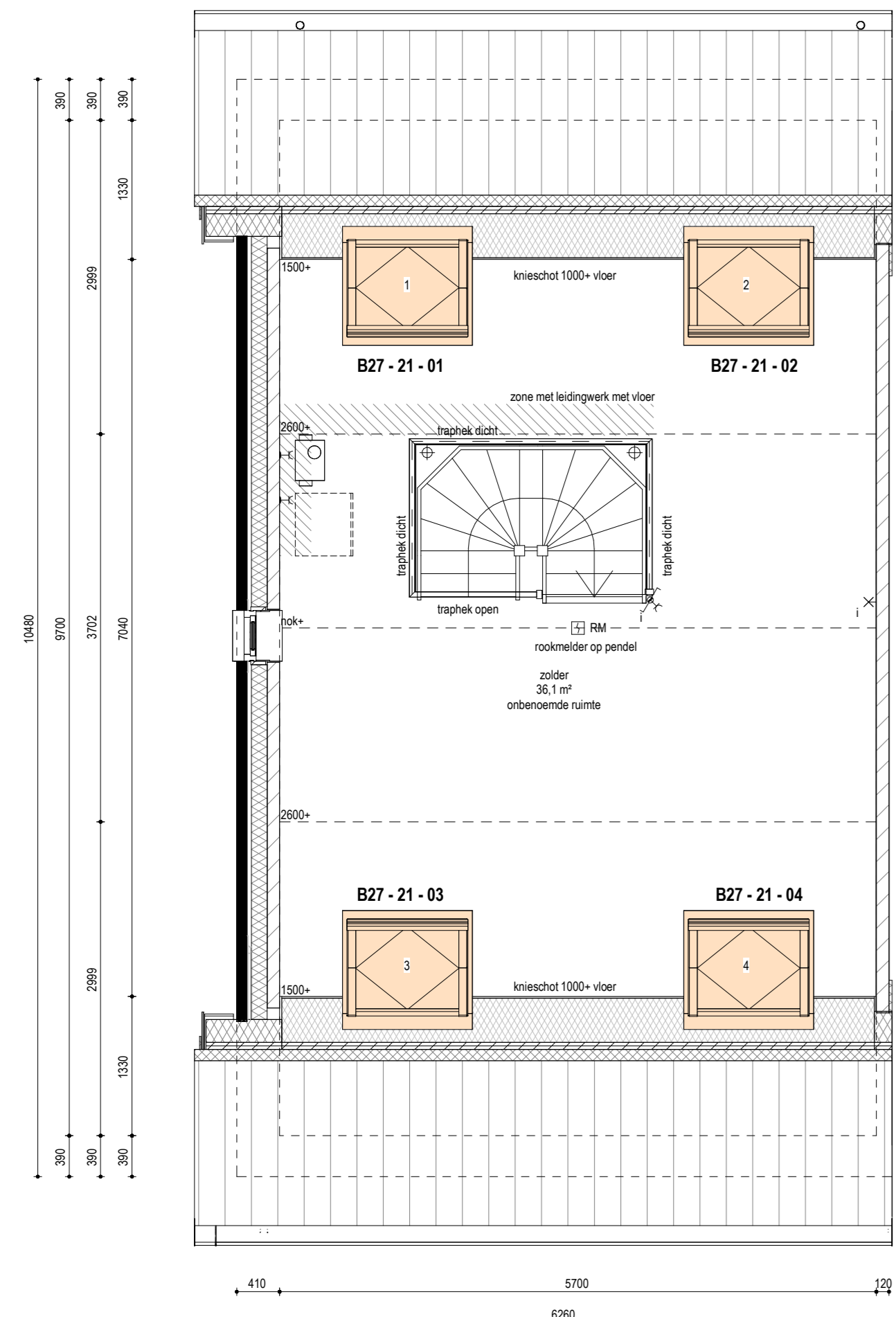
ACHTERGEVEL  
1 : 100



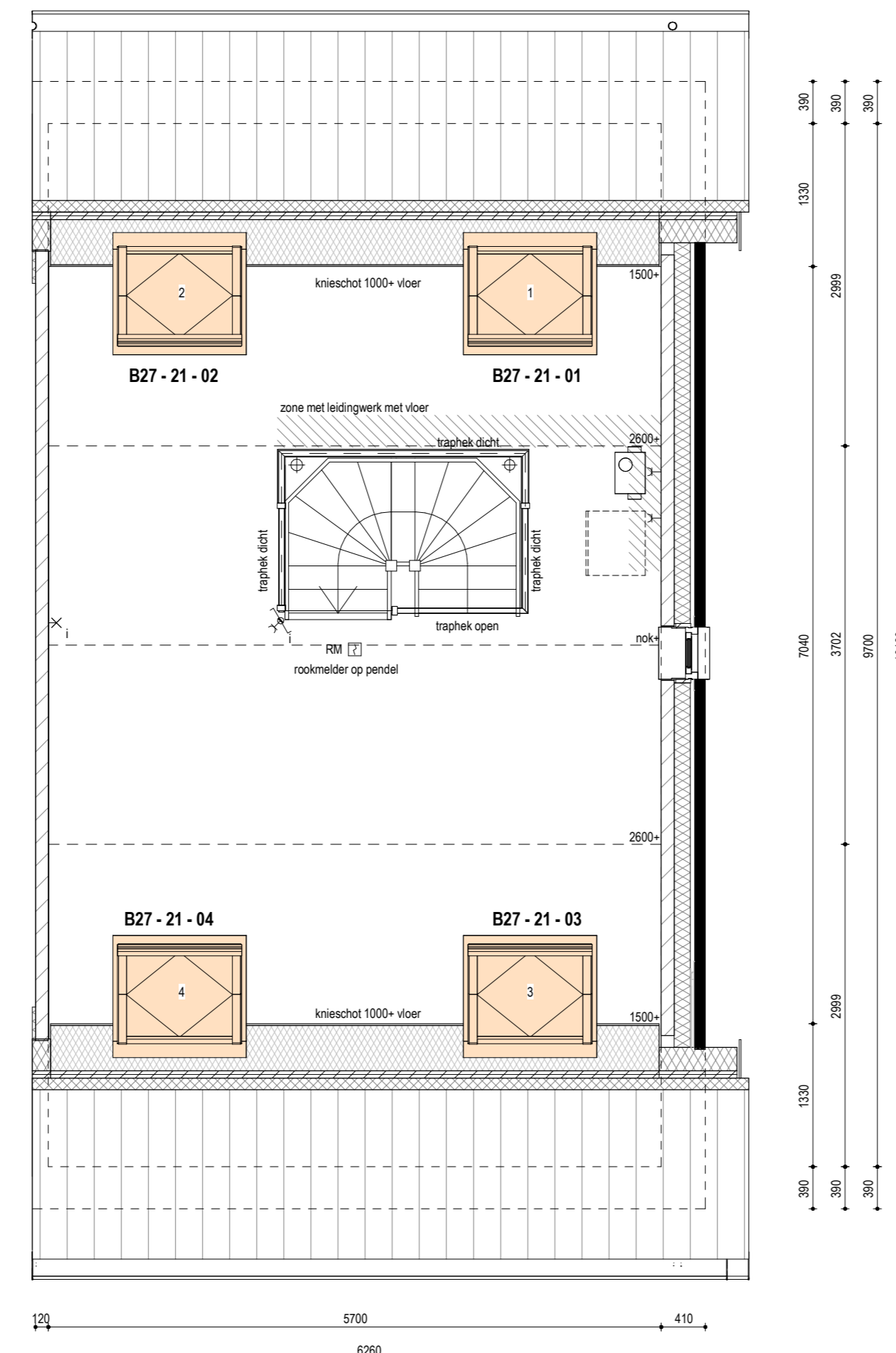
ZIJEGEVEL  
1 : 100



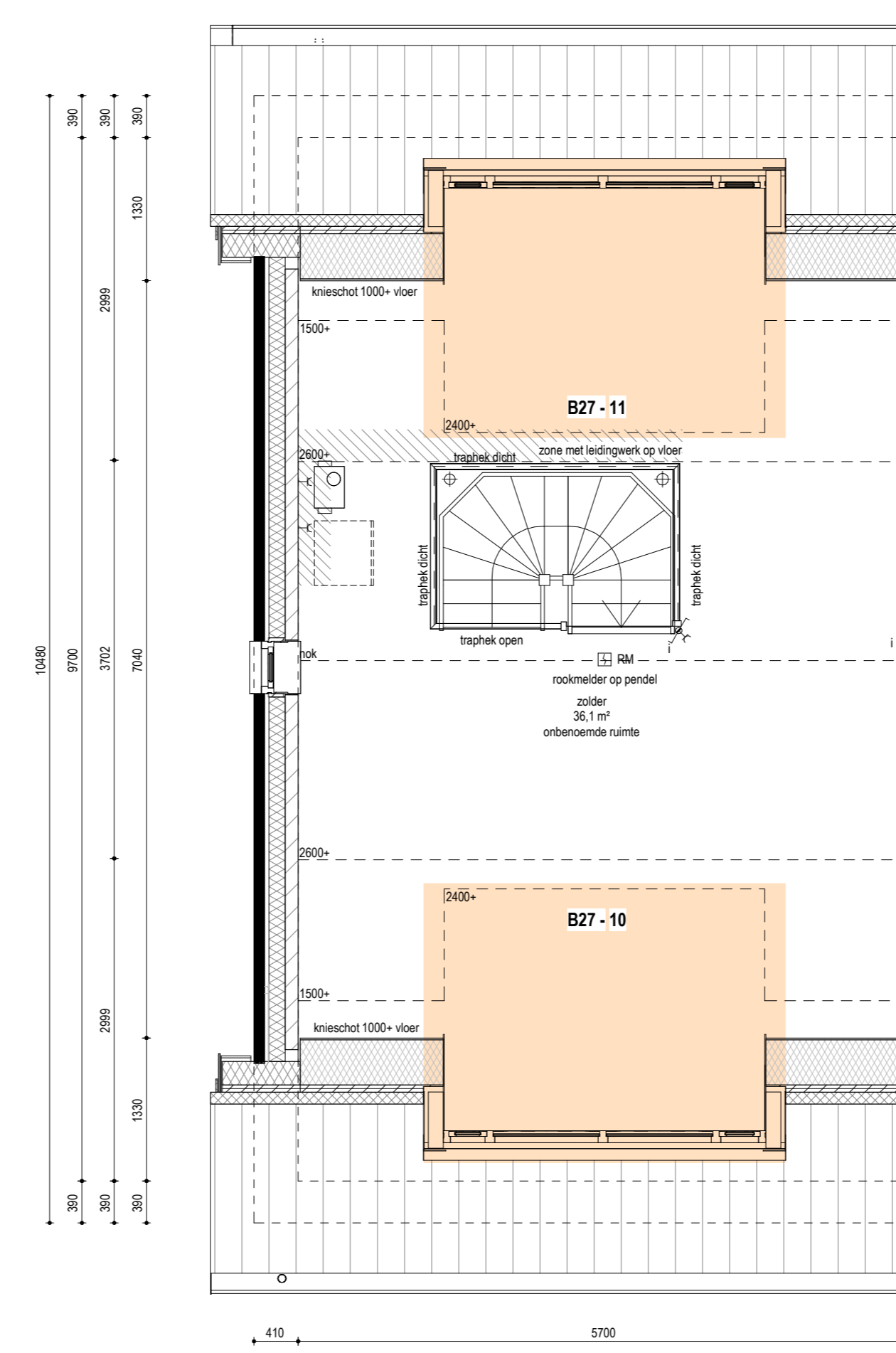
DOORSNEDE  
1 : 100



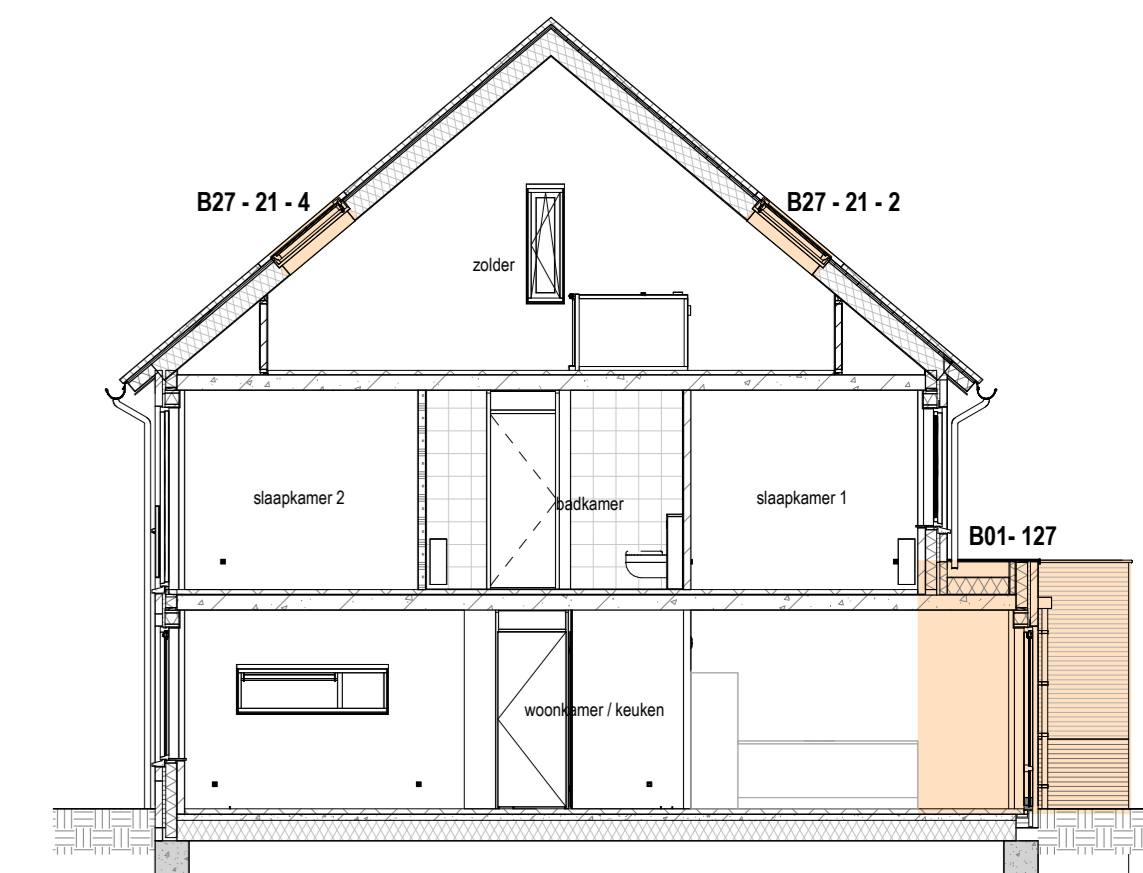
TWEDE VERDIEPING  
1 : 50  
optie dakramen bouwnummer 07 en 09



TWEDE VERDIEPING  
1 : 50  
optie dakramen bouwnummer 06 en 08



TWEDE VERDIEPING  
1 : 50



DOORSNEDE  
1 : 100

RENVOOI (MATERIALEN PLATTEGROND EN DOORSNEDE)

- GEVELSTEEN
- KALKZANDSTEEN
- GRONWAD
- WANDREGELS
- DEKVELD
- ISOLATIE

RENVOOI (INSTALLATIES E & W)

- VENTILATIEROOSTER
- ENKELE WANDCONTACTDOOS
- DUBBELE WANDCONTACTDOOS (LIGGENDE)
- ANGELUFTPUNT ONDERWAD (LOZE LIEKING)
- ENKELPULSE SCHAKELAAR
- WISSELSCHAKELAAR
- SERIESCHAKELAAR
- SERIE - WISSELSCHAKELAAR
- COMBINEERTE WISSELSCHAKELAAR - WANDCONTACTDOOS
- PLAFONDLICHTPUNT
- WANDLICHTPUNT
- ROOKVELD
- BEDEKENINGSPANEEL MECHANISCHE VENTILATIE
- RUIJTE THERMOSTAT
- VERWARMING (RADIATOR)
- VERWARMING
- AFZIGKENTEL MECHANISCHE VENTILATIE IN PLAFOND
- AFZIGKENTEL MECHANISCHE VENTILATIE OP WAND
- MECHANISCHE VENTILATIE (ENIT)
- OPSTELPLAATS WARMTEPOMP